



SOUTH AUSTRALIAN ECONOMIC INDICATORS

EMBARGO: 11:30AM (CANBERRA TIME) FRI 1 MAR 2002

C O N T E N T S

| | <i>page</i> |
|-----------------------------------|-------------|
| Notes | 2 |
| | |
| REVIEW | |
| Overview | 3 |
| Selected features | 4 |
| | |
| TABLES | |
| List of tables | 5 |
| Statistical summary | 6 |
| State summary | 8 |
| State accounts | 9 |
| International trade | 10 |
| Consumption and investment | 13 |
| Production | 15 |
| Consumer price index | 19 |
| Labour force and demography | 20 |
| Average weekly earnings | 23 |
| Financial markets | 24 |
| | |
| ADDITIONAL INFORMATION | |
| Publications source index | 25 |

- For further information about these and related statistics, contact Kirsten Hastwell on Adelaide 08 8237 7369, or the National Information and Referral Service on 1300 135 070.

NOTES

| FORTHCOMING ISSUES | <table border="0"> <thead> <tr> <th style="text-align: left;"><i>ISSUE</i></th> <th style="text-align: left;"><i>RELEASE DATE</i></th> </tr> </thead> <tbody> <tr> <td>April 2002</td> <td>2 April 2002</td> </tr> <tr> <td>May 2002</td> <td>1 May 2002</td> </tr> <tr> <td>June 2002</td> <td>3 June 2002</td> </tr> <tr> <td>July 2002</td> <td>1 July 2002</td> </tr> <tr> <td>August 2002</td> <td>1 August 2002</td> </tr> <tr> <td>September 2002</td> <td>2 September 2002</td> </tr> </tbody> </table> | <i>ISSUE</i> | <i>RELEASE DATE</i> | April 2002 | 2 April 2002 | May 2002 | 1 May 2002 | June 2002 | 3 June 2002 | July 2002 | 1 July 2002 | August 2002 | 1 August 2002 | September 2002 | 2 September 2002 |
|--------------------------|---|--------------|---------------------|------------|-------------------|----------|--|-----------|----------------|-----------|-------------------------|-------------|---------------|----------------|------------------|
| <i>ISSUE</i> | <i>RELEASE DATE</i> | | | | | | | | | | | | | | |
| April 2002 | 2 April 2002 | | | | | | | | | | | | | | |
| May 2002 | 1 May 2002 | | | | | | | | | | | | | | |
| June 2002 | 3 June 2002 | | | | | | | | | | | | | | |
| July 2002 | 1 July 2002 | | | | | | | | | | | | | | |
| August 2002 | 1 August 2002 | | | | | | | | | | | | | | |
| September 2002 | 2 September 2002 | | | | | | | | | | | | | | |
| ABOUT THIS PUBLICATION | <p><i>South Australian Economic Indicators</i> is a monthly publication which contains the latest available data at the time of preparation for a range of statistical series that have been identified as indicators of economic activity in this State. In a number of cases the figures presented are preliminary and subject to revision in subsequent issues.</p> | | | | | | | | | | | | | | |
| CHANGES IN THIS ISSUE | <p>There are no changes in this issue.</p> | | | | | | | | | | | | | | |
| SYMBOLS AND OTHER USAGES | <table border="0"> <tr> <td>n.a.</td> <td>not available</td> </tr> <tr> <td>n.y.a.</td> <td>not yet available</td> </tr> <tr> <td>*</td> <td>subject to sampling variability too high for most practical purposes</td> </tr> <tr> <td>. .</td> <td>not applicable</td> </tr> <tr> <td>0, 0.0</td> <td>nil, or rounded to zero</td> </tr> </table> | n.a. | not available | n.y.a. | not yet available | * | subject to sampling variability too high for most practical purposes | . . | not applicable | 0, 0.0 | nil, or rounded to zero | | | | |
| n.a. | not available | | | | | | | | | | | | | | |
| n.y.a. | not yet available | | | | | | | | | | | | | | |
| * | subject to sampling variability too high for most practical purposes | | | | | | | | | | | | | | |
| . . | not applicable | | | | | | | | | | | | | | |
| 0, 0.0 | nil, or rounded to zero | | | | | | | | | | | | | | |
| ROUNDING | <p>Where figures have been rounded, discrepancies may occur between sums of the component items and totals.</p> | | | | | | | | | | | | | | |
| INFORMATION | <p>All data are original, unless otherwise stated. More detailed information on each series, including explanatory and technical notes, can be obtained from other Australian Bureau of Statistics publications or alternative data sources. To assist those seeking further information, the series presented in the statistical and State summaries provides a reference to the Publication Source Index which is at the end of this publication.</p> | | | | | | | | | | | | | | |

Steve Crabb
Regional Director
South Australia

OVERVIEW

The data in this Overview are presented in trend terms, unless otherwise stated.

INTERNATIONAL TRADE

The value of South Australian merchandise exports in original terms for the month of December 2001 was \$819.4m. This was an increase of 14.1% from the value for November 2001 and an increase of 4.1% on December 2000.

The value of South Australian merchandise imports in original terms for the month of December 2001 was \$380.8m. This was a decrease of 6.4% from the value for November 2001 and a decrease of 14.0% from December 2000.

CONSUMPTION AND INVESTMENT

South Australia's retail turnover increased by 9.5% over the 12 months to December 2001. Retail turnover for December 2001 was \$1,041.1m.

There were 4,208 new motor vehicle registrations in December 2001, a decline of 1.6% on December last year.

Private new capital expenditure in the September Quarter 2001 was \$570m, a decline of 21.2% on September Quarter 2000.

HOUSING

The number of dwelling units approved in December 2001 was 1036, a rise of 92.9% on December last year.

CONSUMER PRICE INDEX

The Consumer Price Index (All Groups) for Adelaide increased by 1.0% to 136.6 in the December Quarter 2001, and by 3.1% over the level recorded twelve months previously. The annual change is no longer affected by the direct or first round effects of The New Tax System, particularly the introduction of the goods and services tax.

LABOUR FORCE AND DEMOGRAPHY

The estimate of employed persons in South Australia rose to 684,500 in January 2002 and is 1.5% higher than the level of twelve months ago (674,200).

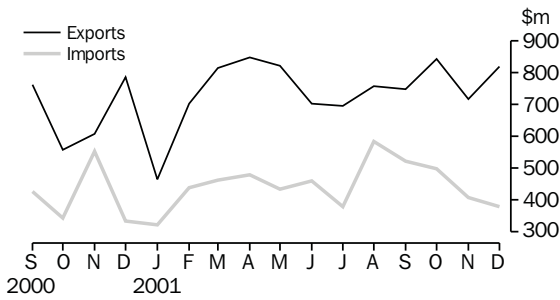
The unemployment rate for South Australia was 6.9% in January 2002. In January 2001 the unemployment rate was 7.1%.

FINANCIAL MARKETS

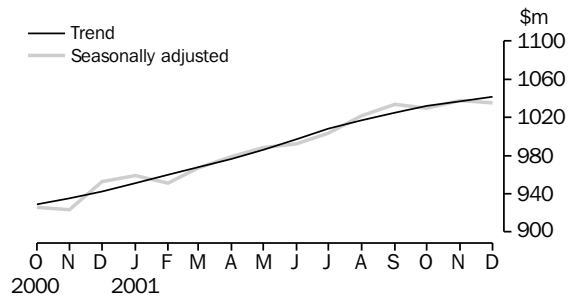
The value of secured housing finance commitments (excluding alterations and additions) was \$484m in December 2001. This was a 29.1% increase on December 2000.

SELECTED FEATURES

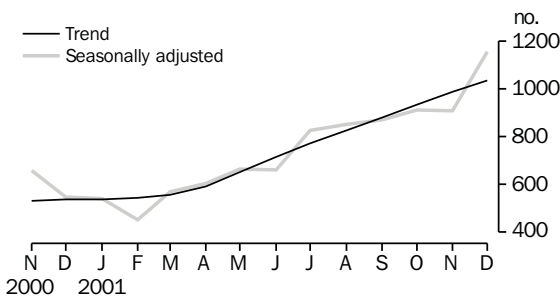
MERCHANDISE EXPORTS AND IMPORTS



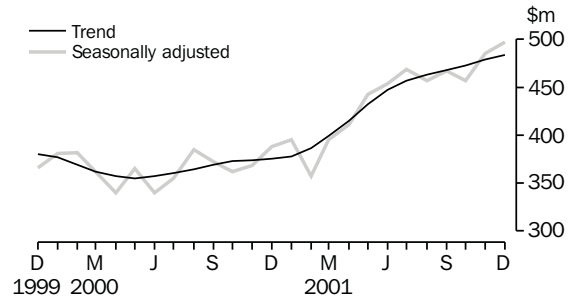
RETAIL TURNOVER



DWELLING UNITS APPROVED

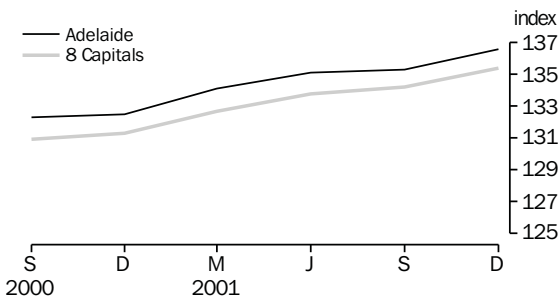


SECURED HOUSING FINANCE COMMITMENTS(a)

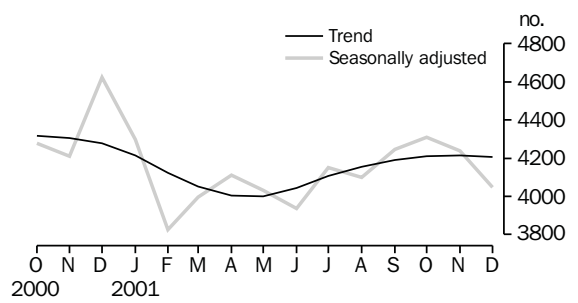


(a) Excludes alterations and additions. Includes refinancing.

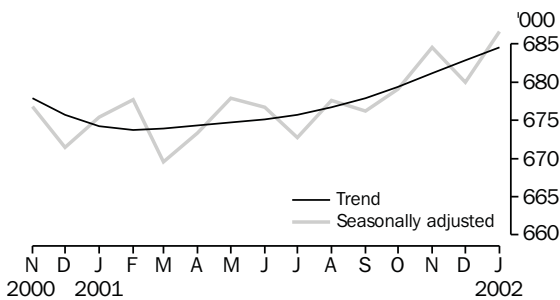
CONSUMER PRICE INDEX



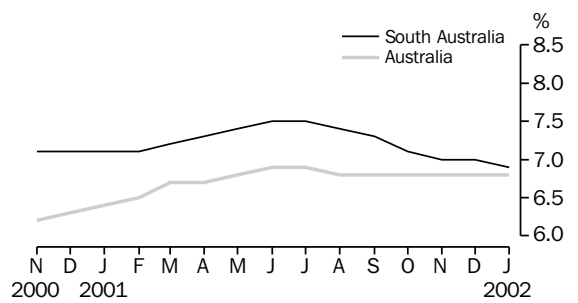
NEW MOTOR VEHICLE REGISTRATIONS



EMPLOYED PERSONS



UNEMPLOYMENT RATE - TREND



LIST OF TABLES

| | | | Page |
|-----------------------------|-----------|--|------|
| STATISTICAL SUMMARY | 1 | Statistical summary | 6 |
| | 2 | State summary | 8 |
| STATE ACCOUNTS | 3 | State accounts at current prices | 9 |
| | 4 | State accounts at chain volume measures | 9 |
| INTERNATIONAL TRADE | 5 | Merchandise exports, by selected commodity group | 10 |
| | 6 | Merchandise exports, by selected countries and country groups | 11 |
| | 7 | Merchandise imports, by selected commodity group | 12 |
| CONSUMPTION AND INVESTMENT | 8 | Turnover of retail establishments, by industry—trend | 13 |
| | 9 | New motor vehicle registrations, by type of vehicle | 13 |
| | 10 | Actual private new capital expenditure, by selected industry and type of asset | 14 |
| | 11 | Tourist accommodation | 14 |
| PRODUCTION | 12 | Building approvals | 15 |
| | 13 | Building commencements | 16 |
| | 14 | Value of building work done and completed during period | 17 |
| | 15 | Production, livestock products and selected commodities | 18 |
| | 16 | Consumer price index, by group—Adelaide | 19 |
| LABOUR FORCE AND DEMOGRAPHY | 17 | Estimated resident population and components of population change | 20 |
| | 18 | Births, deaths, marriages and divorces | 20 |
| | 19 | Civilian labour force status | 21 |
| | 20 | Civilian labour force, unemployment and participation rates | 22 |
| AVERAGE WEEKLY EARNINGS | 21 | Average weekly earnings of employees | 23 |
| FINANCIAL MARKETS | 22 | Secured housing finance commitments | 24 |
| | 23 | Finance commitments | 24 |

| Indicator | Period | South Australia | | | Australia | | | SA as a % of Aust. | Source index |
|--|------------|-----------------|--------------------|------------------------------------|-----------|--------------------|------------------------------------|-----------------------------|-----------------|
| | | Number | % change from | | Number | % change from | | | |
| | | | Previous period | Same period previous year | | Previous period | Same period previous year | | |
| State accounts | | | | | | | | | |
| Domestic final demand | | | | | | | | | |
| Current prices trend (\$m) | Sep qtr 01 | 11 958 | 1.3 | 5.4 | 172 117 | 1.3 | 4.4 | 6.9 | (1) |
| Chain volume measures trend (\$m) | Sep qtr 01 | 11 351 | 0.8 | 2.4 | 163 494 | 1.1 | 1.9 | 6.9 | (1) |
| Private final consumption expenditure | | | | | | | | | |
| Current prices trend (\$m) | Sep qtr 01 | 7 520 | 1.7 | 8.1 | 104 456 | 1.5 | 7.0 | 7.2 | (1) |
| Chain volume measures trend (\$m) | Sep qtr 01 | 7 086 | 1.2 | 4.9 | 98 431 | 1.0 | 3.8 | 7.2 | (1) |
| Private gross fixed capital formation | | | | | | | | | |
| Current prices trend (\$m) | Sep qtr 01 | 1 797 | 0.7 | 1.4 | 29 187 | 1.9 | -1.1 | 6.2 | (1) |
| Chain volume measures trend (\$m) | Sep qtr 01 | 1 706 | -0.6 | -0.2 | 28 121 | 2.7 | -2.1 | 6.1 | (1) |
| Compensation of employees | | | | | | | | | |
| Current prices trend (\$m) | Sep qtr 01 | 5 254 | 0.1 | 2.5 | 82 152 | 1.2 | 5.8 | 6.4 | (1) |
| International accounts | | | | | | | | | |
| Exports (\$m) | Dec 01 | 819.4 | 14.1 | 4.1 | 8 632.9 | -2.2 | -6.3 | 9.5 | (2) |
| Imports (\$m) | Dec 01 | 380.8 | -6.4 | 14.0 | 9 150.4 | -12.7 | -1.1 | 4.2 | (2) |
| Consumption and investment | | | | | | | | | |
| Retail turnover | | | | | | | | | |
| Current prices original (\$m) | Dec 01 | 1 336.0 | 21.2 | 6.5 | 17 847.9 | 23.3 | 6.9 | 7.5 | (3) |
| Current prices trend (\$m) | Dec 01 | 1 041.1 | 0.2 | 9.5 | 13 871.7 | 0.3 | 7.8 | 7.5 | (3) |
| Chain volume measures original (\$m) | Dec qtr 01 | 3 247.6 | 15.7 | 20.4 | 43 039.8 | 15.6 | 5.0 | 7.5 | (3) |
| New motor vehicle registrations | | | | | | | | | |
| Original (no.) | Dec 01 | 4 111 | -11.9 | -11.6 | 65 985 | -6.0 | -9.3 | 6.2 | (4) |
| Trend (no.) | Dec 01 | 4 208 | -0.2 | -1.6 | 66 407 | 0.5 | -2.5 | 6.3 | (4) |
| Private new capital expenditure | | | | | | | | | |
| Current prices original (\$m) | Sep qtr 01 | 567 | 1.1 | -12.6 | 9 419 | -7.7 | -4.9 | 6.0 | (5) |
| Current prices trend (\$m) | Sep qtr 01 | 570 | -4.8 | -21.2 | 9 625 | -0.3 | -4.9 | 5.9 | (5) |
| Private new capital expenditure (\$m) | 2000-01 | 2 654 | 8.3 | 8.3 | 39 491 | -7.0 | -7.0 | 6.7 | (5) |
| Takings from accommodation—hotels, motels, guesthouses and serviced apartments | Sep qtr 01 | 50.4 | -3.2 | 0.7 | 1 226.5 | 10.4 | -7.8 | 4.1 | (6) |
| Production | | | | | | | | | |
| Dwelling unit approvals | | | | | | | | | |
| Original (no.) | Dec 01 | 968 | 4.0 | 111.4 | 12 249 | -18.0 | 35.2 | 7.9 | (7) |
| Trend (no.) | Dec 01 | 1 036 | 5.0 | 92.9 | 14 104 | -2.0 | 48.7 | 7.3 | (7) |
| Dwelling units commenced (no.) | Sep qtr 01 | 2 401 | 47.5 | 32.0 | 40 830 | 35.7 | 38.8 | 5.9 | (8) |
| Value of non-residential building approvals—trend (\$m) | Dec 01 | 61.9 | -2.2 | 36.0 | 1 223.4 | 8.2 | 14.9 | 5.1 | (7) |
| Value of total building activity | | | | | | | | | |
| Commenced (\$m) | Sep qtr 01 | 548.3 | 0.7 | 30.3 | 10 089.3 | 16.4 | 29.9 | 5.4 | (8) |
| Work done (\$m) | Sep qtr 01 | 450.4 | 9.2 | 12.7 | 9 347.0 | 10.5 | 3.2 | 4.8 | (8) |
| Work yet to be done (\$m) | Sep qtr 01 | 695.3 | 15.9 | 31.6 | 13 455.6 | 9.5 | 15.3 | 5.2 | (8) |
| Value of engineering construction work done (\$m) | Sep qtr 01 | 296.6 | -19.2 | 16.0 | 4 419.5 | -13.6 | -2.3 | 6.7 | (9) |
| Manufacturing production | | | | | | | | | |
| Red meat (tonnes) | Dec qtr 01 | 56 222 | 20.6 | 0.9 | 726 441 | -6.7 | -7.3 | 7.7 | (11) |
| Mineral exploration expenditure (other than for petroleum)(a) (\$m) | Sep qtr 01 | 6.9 | -44.4 | 25.5 | 167.4 | -8.4 | -1.4 | 4.1 | (12) |

(a) From July 2000 value data no longer contains Wholesale Sales Tax.

| Indicator | Period | South Australia | | | Australia | | | SA as a % of Aust. | Source index |
|---|------------|-----------------|--------------------|------------------------------------|-----------|--------------------|------------------------------------|-----------------------------|-----------------|
| | | Number | % change from | | Number | % change from | | | |
| | | | Previous period | Same period previous year | | Previous period | Same period previous year | | |
| Prices(a) | | | | | | | | | |
| CPI—All groups (index no.) | Dec qtr 01 | 136.6 | 1.0 | 3.1 | 135.4 | 0.9 | 3.1 | .. | (13) |
| Price index of materials used in house building (index no.) | Dec qtr 01 | 130.1 | 1.3 | 0.3 | 125.2 | 0.4 | 0.6 | .. | (14) |
| Price index of materials used in building other than houses (index no.) | Dec qtr 01 | 118.3 | 0.9 | 1.3 | 118.1 | 0.5 | 1.5 | .. | (14) |
| Price index of established houses (index no.) | Sep qtr 01 | 140.7 | 3.1 | 10.3 | 167.7 | 5.2 | 14.0 | .. | (16) |
| Price index of project homes (index no.) | Sep qtr 01 | 144.9 | 1.0 | 2.3 | 136.4 | 0.7 | 1.6 | .. | (16) |
| Labour force and demography | | | | | | | | | |
| Population (resident at end qtr) ('000) | Jun qtr 01 | 1 502.4 | 0.1 | 0.3 | 19 386.7 | 0.3 | 1.2 | 7.7 | (17) |
| Labour force | | | | | | | | | |
| Original ('000) | Jan 02 | 734.0 | -1.3 | 1.6 | 9 851.1 | -1.3 | 2.3 | 7.5 | (18) |
| Trend ('000) | Jan 02 | 735.4 | 0.2 | 1.4 | 9 902.3 | 0.2 | 1.7 | 7.4 | (18) |
| Employed persons | | | | | | | | | |
| Original ('000) | Jan 02 | 677.7 | -2.0 | 1.6 | 9 123.8 | -2.0 | 1.6 | 7.4 | (18) |
| Trend ('000) | Jan 02 | 684.5 | 0.2 | 1.5 | 9 225.3 | 0.2 | 1.2 | 7.4 | (18) |
| Participation rate | | | | | | | | | |
| Original(b) (%) | Jan 02 | 60.4 | -0.8 | 0.7 | 63.4 | -0.9 | 0.6 | .. | (18) |
| Trend(b) (%) | Jan 02 | 60.5 | 0.1 | 0.5 | 63.8 | 0.1 | 0.3 | .. | (18) |
| Unemployment rate | | | | | | | | | |
| Original(b) (%) | Jan 02 | 7.7 | 0.7 | 0.0 | 7.4 | 0.8 | 0.7 | .. | (18) |
| Trend(b) (%) | Jan 02 | 6.9 | -0.1 | -0.2 | 6.8 | 0.0 | 0.0 | .. | (18) |
| Job vacancies ('000) | Nov 01 | 6.3 | 1.6 | 16.7 | 83.5 | -9.9 | -23.1 | 7.5 | (19) |
| Industrial disputes ('000 working days lost) | Oct 01 | 0.7 | -41.7 | 600.0 | 34.4 | 52.9 | 14.3 | 2.0 | (20) |
| Income | | | | | | | | | |
| Average weekly earnings (full-time adults; ordinary time) | | | | | | | | | |
| Original (\$) | Aug 01 | 791.70 | 1.4 | 6.2 | 838.50 | 1.7 | 5.1 | .. | (21) |
| Trend (\$) | Aug 01 | 791.60 | 1.2 | 6.0 | 837.60 | 1.6 | 5.4 | .. | (21) |
| Wage cost index (total hourly rate excluding bonuses)(c) (index no.) | Sep qtr 01 | 112.6 | 0.9 | 3.2 | 113.6 | 1.1 | 3.6 | .. | (22) |
| Financial markets | | | | | | | | | |
| Secured housing finance(d) (\$m) | Dec 01 | 505.0 | -3.8 | 27.8 | 7 579.0 | -11.1 | 30.6 | 6.7 | (23) |
| Finance commitments | | | | | | | | | |
| Personal (\$m) | Dec 01 | 313.2 | -12.8 | 111.5 | 4 419.0 | -15.0 | 4.0 | 7.1 | (24) |
| Commercial (\$m) | Dec 01 | 892.3 | 5.4 | 23.2 | 17 979.0 | 5.5 | -0.7 | 5.0 | (24) |
| Lease (\$m) | Dec 01 | 16.2 | -36.7 | 12.5 | 560.0 | -14.1 | -31.0 | 2.9 | (24) |
| Interest rates(b) | | | | | | | | | |
| Banks new housing loans (%) | Dec 01 | .. | .. | .. | 6.05 | -0.25 | -2.00 | .. | (25) |
| Bank loans—small, medium business(e) (%) | Dec 01 | .. | .. | .. | 7.60 | 0.00 | -1.60 | .. | (25) |
| Bank loans—large business (%) | Dec 01 | .. | .. | .. | 7.95 | -0.10 | -1.80 | .. | (25) |
| (a) Base year of each index 1989-90 = 100. | | | | | | | | | |
| (b) Change is shown in terms of percentage points. | | | | | | | | | |
| (c) Base year of index Sep 1997 = 100. | | | | | | | | | |
| (d) Excludes alterations and additions. Includes refinancing. | | | | | | | | | |
| (e) Rate for business loans over \$50,000. | | | | | | | | | |

2

STATE SUMMARY

| Indicator | Period | NSW | Vic. | Qld | SA | WA | Tas. | NT | ACT | Source index |
|--|------------|--------|--------|--------|---------------|--------|--------|---------|---------|--------------|
| SELECTED INDICATORS | | | | | | | | | | |
| CPI—All groups(a) (index no.) | Dec qtr 01 | 136.6 | 134.8 | 135.8 | 136.6 | 132.6 | 133.9 | 133.5 | 134.9 | (13) |
| Participation rate trend (%) | Jan 02 | 62.6 | 64.0 | 64.9 | 60.5 | 66.3 | 58.6 | 74.5 | 71.4 | (18) |
| Unemployment rate trend (%) | Jan 02 | 6.4 | 6.6 | 8.0 | 6.9 | 6.5 | 8.7 | 8.3 | 4.1 | (18) |
| Average weekly earnings (full-time adults; ordinary time) trend (\$) | Aug 01 | 889.10 | 815.60 | 779.30 | 791.60 | 841.10 | 764.60 | 824.70 | 951.00 | (22) |
| SELECTED INDICATORS PER HEAD OF POPULATION(b) | | | | | | | | | | |
| State final demand | | | | | | | | | | |
| Chain volume measures trend (\$'000) | Sep qtr 01 | 8.6 | 8.4 | 8.0 | 7.6 | 8.5 | 7.1 | 9.9 | 16.2 | (1) |
| Retail turnover | | | | | | | | | | |
| Current prices original (\$) | Dec 01 | 940.2 | 912.1 | 898.9 | 889.2 | 938.2 | 805.5 | 798.1 | 1 197.4 | (3) |
| Current prices, trend | Dec 01 | 730.5 | 693.5 | 708.9 | 693.0 | 735.8 | 625.6 | 728.8 | 929.4 | (3) |
| New motor vehicle registrations trend (no. per '000 population) | Dec 01 | 3.3 | 2.6 | 3.6 | 2.8 | 3.2 | 2.9 | 3.0 | 3.3 | (4) |
| Private new capital expenditure | | | | | | | | | | |
| Current prices trend (\$) | Sep qtr 01 | 472.0 | 499.7 | 411.5 | 379.4 | 761.4 | 316.8 | 1 417.1 | 410.6 | (5) |
| Dwelling unit approvals | | | | | | | | | | |
| Original (no. per '000 population) | Dec 01 | 0.525 | 0.779 | 0.615 | 0.644 | 0.774 | 0.340 | 0.182 | 0.573 | (7) |
| Trend (no. per '000 population) | Dec 01 | 0.676 | 0.816 | 0.759 | 0.690 | 0.905 | 0.340 | 0.243 | 0.996 | (7) |
| Secured housing finance(c) (\$) | Dec 01 | 462.9 | 370.1 | 347.0 | 336.1 | 404.2 | 189.3 | 192.3 | 334.2 | (24) |
| PERCENTAGE CHANGE FROM PREVIOUS PERIOD | | | | | | | | | | |
| State final demand | | | | | | | | | | |
| Chain volume measures trend (%) | Sep qtr 01 | 0.7 | 1.3 | 1.5 | 0.8 | 2.1 | 1.3 | -0.6 | 0.9 | (1) |
| Retail turnover | | | | | | | | | | |
| Current prices original (%) | Dec 01 | 24.1 | 25.0 | 22.8 | 21.2 | 21.2 | 21.9 | 6.0 | 23.5 | (3) |
| Current prices, trend | Dec 01 | 0.3 | 0.2 | 0.3 | 0.2 | 0.8 | 0.4 | 0.3 | 0.3 | (3) |
| New motor vehicle registrations trend (%) | Dec 01 | 0.1 | -31.8 | -0.2 | -0.2 | 1.6 | 4.1 | 0.5 | -1.0 | (4) |
| Private new capital expenditure | | | | | | | | | | |
| Current prices trend (%) | Sep qtr 01 | -3.6 | -1.5 | 4.1 | -4.8 | 1.3 | 10.4 | 6.9 | -4.4 | (5) |
| Dwelling unit approvals | | | | | | | | | | |
| Original (%) | Dec 01 | -24.8 | 0.2 | -27.1 | 4.0 | -26.9 | -5.9 | -28.0 | -52.4 | (7) |
| Trend (%) | Dec 01 | -0.6 | -3.2 | -0.5 | 5.0 | -1.4 | -0.6 | -18.6 | 6.1 | (7) |
| CPI—All groups (%) | Dec qtr 01 | 0.9 | 0.9 | 1.2 | 1.0 | 0.8 | 0.8 | 0.8 | 1.3 | (13) |
| Participation rate trend(d) (%) | Jan 02 | 0.1 | 0.1 | 0.0 | 0.1 | -0.1 | -0.1 | 0.3 | 0.0 | (18) |
| Unemployment rate trend(d) (%) | Jan 02 | 0.0 | 0.0 | 0.0 | -0.1 | 0.0 | -0.2 | 0.0 | -0.1 | (18) |
| Average weekly earnings (full-time adults; ordinary time) trend (%) | Aug 01 | 2.3 | 1.7 | 1.2 | 1.2 | 0.8 | 1.3 | 0.4 | 0.9 | (22) |
| Secured housing finance (%) | Dec 01 | -14.5 | -8.1 | -10.1 | -3.8 | -10.0 | -10.1 | -5.0 | -14.6 | (24) |

(a) Base year of index 1989-90 = 100.

(b) The latest quarterly estimate of Australian resident population has been used to calculate ratios for subsequent periods.

(c) Excludes alterations and additions. Includes refinancing.

(d) Change is shown in terms of percentage points.

3

STATE ACCOUNTS AT CURRENT PRICES

| Period | Final consumption expenditure | | Gross fixed capital formation | | State final demand | Gross State product | Compensation of employees |
|------------------------|-------------------------------|--------------------|-------------------------------|-----------|--------------------|---------------------|---------------------------|
| | Households | General government | Private | Public | | | |
| ANNUAL (\$m) | | | | | | | |
| 1998-99 | 25 427 | 7 946 | 5 965 | 1 353 | 40 691 | 39 529 | 19 103 |
| 1999-00 | 26 549 | 8 885 | (a)10 012 | (a)-1 437 | 44 009 | 41 340 | 19 956 |
| 2000-01 | 28 782 | 9 111 | 8 216 | 147 | 46 257 | 43 194 | 20 899 |
| QUARTERLY, TREND (\$m) | | | | | | | |
| 1999-00 | | | | | | | |
| June | 6 792 | 2 263 | 1 758 | 383 | 11 196 | n.a. | 5 067 |
| 2000-01 | | | | | | | |
| September | 6 958 | 2 250 | 1 760 | 377 | 11 344 | n.a. | 5 127 |
| December | 7 134 | 2 256 | 1 736 | 348 | 11 474 | n.a. | 5 186 |
| March | 7 274 | 2 282 | 1 754 | 321 | 11 632 | n.a. | 5 229 |
| June | 7 393 | 2 293 | 1 784 | 331 | 11 800 | n.a. | 5 249 |
| 2001-02 | | | | | | | |
| September | 7 520 | 2 275 | 1 797 | 359 | 11 958 | n.a. | 5 254 |

(a) The negative figure for Public gross fixed capital formation and the larger than usual positive figure for Private gross fixed capital formation are the result of the sale of the South Australian electrical transmission network in December quarter 1999. For more information see *National Income, Expenditure and Product, Australian National Accounts, June 2000* (Cat. no. 5206.0).

Source: *Australian National Accounts: Quarterly State Details* (Cat. no. 5206.0.40.001), and *Australian National Accounts: State Accounts* (Cat. no. 5220.0).

4

STATE ACCOUNTS AT CHAIN VOLUME MEASURES(a)

| Period | Final consumption expenditure | | Gross fixed capital formation | | State final demand | Gross State product |
|------------------------|-------------------------------|--------------------|-------------------------------|----------|--------------------|---------------------|
| | Households | General government | Private | Public | | |
| ANNUAL (\$m) | | | | | | |
| 1998-99 | 25 816 | 8 331 | 6 127 | 1 338 | 41 729 | 40 931 |
| 1999-00 | 26 549 | 8 885 | (b)10 011 | (b)-1437 | 44 009 | 41 340 |
| 2000-01 | 27 512 | 8 946 | 7,976 | 127 | 44 562 | 41 617 |
| QUARTERLY, TREND (\$m) | | | | | | |
| 1999-00 | | | | | | |
| June | 6 691 | 2 241 | 1 746 | 374 | 11 058 | n.a. |
| 2000-01 | | | | | | |
| September | 6 755 | 2 228 | 1 719 | 376 | 11 089 | n.a. |
| December | 6 842 | 2 218 | 1 690 | 343 | 11 088 | n.a. |
| March | 6 926 | 2 219 | 1 699 | 317 | 11 158 | n.a. |
| June | 7 005 | 2 219 | 1 716 | 324 | 11 262 | n.a. |
| 2001-02 | | | | | | |
| September | 7 086 | 2 211 | 1 706 | 358 | 11 351 | n.a. |

(a) Reference year for chain volume measures is 1999-2000.

(b) The negative figure for Public gross fixed capital formation and the larger than usual positive figure for Private gross fixed capital formation are the result of the sale of the South Australian electrical transmission network in December quarter 1999. For more information see *National Income, Expenditure and Product, Australian National Accounts, June 2000* (Cat. no. 5206.0).

Source: *Australian National Accounts: Quarterly State Details* (Cat. no. 5206.0.40.001), and *Australian National Accounts: State Accounts* (Cat. no. 5220.0).

5

MERCHANDISE EXPORTS, BY SELECTED COMMODITY GROUP(a)

| <i>Period</i> | <i>Meat and meat preparations</i> | <i>Wheat</i> | <i>Wine</i> | <i>Wool and sheepskins (excl. wool tops)</i> | <i>Machinery</i> | <i>Metals and metal manufactures</i> | <i>Fish and crustaceans</i> | <i>Road vehicles, parts and accessories</i> | <i>Petroleum and petroleum products</i> | <i>Total(b)</i> |
|----------------|-----------------------------------|--------------|-------------|--|------------------|--------------------------------------|-----------------------------|---|---|-----------------|
| | \$'000 | \$'000 | \$'000 | \$'000 | \$'000 | \$'000 | \$'000 | \$'000 | \$'000 | \$'000 |
| 1998-99 | 198 541 | 567 812 | 693 733 | 212 226 | 384 702 | 543 675 | 252 592 | 651 949 | 154 425 | 5 332 300 |
| 1999-00 | 160 483 | 473 086 | 899 348 | 179 716 | 353 205 | 805 744 | 394 375 | 883 792 | 218 466 | 6 188 231 |
| 2000-01 | 262 565 | 767 524 | 1 081 598 | 236 034 | 381 785 | 1 019 926 | 451 841 | 1 399 489 | 355 781 | 8 286 812 |
| 2000-01 | | | | | | | | | | |
| July | 17 198 | 19 207 | 91 473 | 18 494 | 31 670 | 66 877 | 37 243 | 113 052 | 28 523 | 569 048 |
| August | 12 891 | 34 504 | 91 522 | 13 905 | 32 251 | 54 225 | 117 255 | 119 957 | 12 106 | 643 760 |
| September | 21 175 | 66 366 | 110 883 | 17 429 | 29 031 | 96 525 | 66 255 | 137 895 | 49 737 | 761 874 |
| October | 22 718 | 31 594 | 104 142 | 26 188 | 29 363 | 93 449 | 17 387 | 66 730 | 12 239 | 557 546 |
| November | 21 086 | 34 320 | 66 654 | 24 868 | 39 987 | 92 385 | 25 144 | 99 097 | 37 355 | 608 459 |
| December | 23 003 | 55 592 | 74 430 | 17 779 | 35 714 | 95 601 | 23 853 | 197 310 | 34 021 | 786 954 |
| January | 15 352 | 42 141 | 56 686 | 12 389 | 19 399 | 71 312 | 27 610 | 36 155 | 11 715 | 465 417 |
| February | 23 730 | 80 599 | 78 767 | 19 868 | 27 828 | 89 603 | 16 885 | 109 181 | 36 380 | 703 077 |
| March | 27 691 | 112 562 | 92 701 | 22 506 | 32 623 | 99 791 | 21 216 | 148 177 | 17 124 | 816 155 |
| April | 26 339 | 93 911 | 121 497 | 19 887 | 32 164 | 89 887 | 23 097 | 155 998 | 52 960 | 848 280 |
| May | 27 404 | 152 550 | 99 062 | 22 367 | 33 559 | 79 393 | 28 980 | 115 827 | 33 738 | 821 839 |
| June | 23 977 | 44 178 | 93 781 | 20 353 | 38 196 | 90 878 | 46 917 | 100 111 | 29 883 | 704 372 |
| 2001-02 | | | | | | | | | | |
| July | 18 743 | 84 671 | 89 987 | 15 060 | 31 740 | 80 081 | 105 885 | 85 602 | 4 227 | 694 864 |
| August | 16 523 | 104 764 | 111 856 | 12 339 | 23 892 | 65 167 | 109 720 | 87 611 | 28 997 | 758 264 |
| September | 26 566 | 50 769 | 145 922 | 14 797 | 23 408 | 83 420 | 18 330 | 157 753 | 26 830 | 747 563 |
| October | 29 788 | 74 206 | 134 360 | 23 871 | 24 803 | 80 651 | 16 992 | 217 406 | 18 093 | 843 119 |
| November | 29 499 | 95 995 | 81 237 | 24 775 | 21 997 | 88 456 | 23 444 | 135 741 | 32 996 | 718 109 |
| December | 29 692 | 96 478 | 102 536 | 17 598 | 23 065 | 62 618 | 30 732 | 209 272 | 20 394 | 819 427 |

(a) Restrictions are placed on the release of statistics for certain commodities for reasons of confidentiality. These restrictions do not affect total export and import figures, but they can affect some items within commodity, industry and country tables. See *International Trade* (Cat. no. 5422.0), Explanatory Notes, paragraph 30, for more details.

(b) Includes other commodity groups not listed.

Source: ABS data available on request.

6

MERCHANDISE EXPORTS, BY SELECTED COUNTRIES AND COUNTRY GROUPS

| Period | European Union | | | | | South-East and North-East Asia | | | | |
|----------------|--------------------------|-------------|----------------|----------------------|-------------|--------------------------------|---------|-----------|---------|-----------|
| | United States of America | Middle East | United Kingdom | Total European Union | New Zealand | Japan | China | Hong Kong | ASEAN | Total |
| | \$'000 | \$'000 | \$'000 | \$'000 | \$'000 | \$'000 | \$'000 | \$'000 | \$'000 | \$'000 |
| 1998-99 | 705 166 | 640 412 | 476 340 | 928 468 | 385 513 | 625 530 | 302 776 | 219 536 | 432 730 | 1 898 837 |
| 1999-00 | 954 681 | 724 871 | 625 154 | 1 073 928 | 446 026 | 787 295 | 315 199 | 255 679 | 492 304 | 2 297 913 |
| 2000-01 | 1 354 789 | 1 335 811 | 713 525 | 1 232 563 | 480 887 | 963 481 | 437 939 | 298 939 | 682 671 | 2 882 839 |
| 2000-01 | | | | | | | | | | |
| July | 100 224 | 65 100 | 55 658 | 85 089 | 34 853 | 85 633 | 24 427 | 23 112 | 51 101 | 216 245 |
| August | 128 909 | 59 559 | 66 643 | 101 217 | 32 894 | 157 189 | 22 980 | 12 572 | 45 170 | 262 062 |
| September | 96 183 | 108 823 | 86 988 | 136 672 | 39 384 | 142 299 | 23 256 | 24 806 | 66 988 | 292 464 |
| October | 57 168 | 61 372 | 84 703 | 128 689 | 42 321 | 39 822 | 42 670 | 18 484 | 59 867 | 197 515 |
| November | 141 743 | 53 997 | 30 339 | 59 478 | 54 206 | 55 931 | 54 946 | 36 927 | 54 355 | 249 513 |
| December | 161 458 | 158 267 | 37 513 | 74 503 | 29 610 | 81 125 | 17 245 | 31 419 | 61 396 | 245 174 |
| January | 55 623 | 90 284 | 32 418 | 59 100 | 21 446 | 37 119 | 24 316 | 31 873 | 51 910 | 172 995 |
| February | 100 916 | 145 190 | 51 056 | 109 310 | 37 641 | 54 585 | 61 981 | 29 821 | 59 017 | 239 767 |
| March | 115 814 | 178 076 | 59 618 | 120 294 | 47 460 | 37 205 | 55 989 | 28 698 | 51 248 | 224 428 |
| April | 115 986 | 183 447 | 98 255 | 158 996 | 47 291 | 80 941 | 43 900 | 15 196 | 65 386 | 268 384 |
| May | 141 133 | 160 104 | 55 667 | 102 367 | 45 043 | 105 667 | 21 910 | 22 827 | 53 850 | 253 674 |
| June | 139 602 | 71 593 | 54 666 | 96 847 | 48 740 | 85 966 | 44 319 | 23 205 | 62 383 | 260 621 |
| 2001-02 | | | | | | | | | | |
| July | 115 848 | 121 291 | 53 283 | 86 715 | 49 197 | 141 618 | 18 061 | 12 359 | 54 577 | 250 375 |
| August | 131 917 | 134 855 | 67 350 | 98 416 | 53 138 | 146 655 | 19 006 | 16 589 | 44 614 | 258 447 |
| September | 149 151 | 114 226 | 93 941 | 150 232 | 53 861 | 74 367 | 49 290 | 9 474 | 51 316 | 211 023 |
| October | 137 818 | 183 472 | 92 358 | 159 312 | 53 265 | 45 125 | 39 113 | 21 415 | 47 756 | 216 882 |
| November | 140 106 | 120 329 | 46 313 | 92 117 | 52 453 | 84 828 | 47 336 | 25 667 | 47 834 | 244 974 |
| December | 184 560 | 174 937 | 53 266 | 106 044 | 55 729 | 69 548 | 35 578 | 24 124 | 40 922 | 197 388 |

Source: ABS data available on request.

7

MERCHANDISE IMPORTS, BY SELECTED COMMODITY GROUP(a)

| <i>Period</i> | <i>Food, beverages and tobacco</i> | <i>Petroleum and petroleum products</i> | <i>Chemicals</i> | <i>Textiles</i> | <i>Metals and metal manufactures</i> | <i>Machinery</i> | <i>Road vehicle parts and accessories</i> | <i>Other manufactured goods</i> | <i>Total(b)</i> |
|----------------|------------------------------------|---|------------------|-----------------|--------------------------------------|------------------|---|---------------------------------|-----------------|
| | \$'000 | \$'000 | \$'000 | \$'000 | \$'000 | \$'000 | \$'000 | \$'000 | \$'000 |
| 1998-99 | 162 784 | 271 492 | 281 097 | 96 052 | 264 732 | 917 879 | 812 096 | 765 643 | 3 716 152 |
| 1999-00 | 163 509 | 515 641 | 263 959 | 97 100 | 262 737 | 1 164 672 | 834 842 | 845 913 | 4 319 348 |
| 2000-01 | 183 196 | 968 428 | 284 227 | 97 281 | 315 327 | 1 205 016 | 854 759 | 926 817 | 5 044 553 |
| 2000-01 | | | | | | | | | |
| July | 12 672 | 12 429 | 15 366 | 7 477 | 27 313 | 81 141 | 88 021 | 64 441 | 323 578 |
| August | 15 478 | 105 525 | 18 815 | 10 427 | 31 299 | 84 295 | 85 147 | 100 451 | 466 221 |
| September | 14 607 | 112 111 | 16 617 | 7 996 | 26 072 | 92 650 | 69 757 | 74 871 | 426 734 |
| October | 19 561 | 20 | 16 312 | 9 911 | 29 337 | 100 090 | 77 594 | 76 202 | 343 395 |
| November | 19 530 | 186 246 | 16 133 | 7 366 | 30 389 | 107 265 | 79 920 | 84 173 | 552 576 |
| December | 13 166 | 42 077 | 15 344 | 6 399 | 20 145 | 102 436 | 58 572 | 62 099 | 333 906 |
| January | 12 558 | 16 440 | 24 436 | 6 950 | 27 734 | 97 647 | 47 013 | 71 387 | 321 682 |
| February | 11 456 | 123 599 | 22 811 | 8 947 | 22 891 | 89 394 | 59 947 | 78 042 | 438 399 |
| March | 14 957 | 82 612 | 36 950 | 6 792 | 24 140 | 110 739 | 77 516 | 87 106 | 462 244 |
| April | 15 533 | 99 678 | 57 548 | 7 239 | 25 625 | 104 946 | 71 621 | 75 171 | 478 988 |
| May | 16 160 | 77 698 | 29 168 | 9 156 | 23 837 | 117 562 | 67 744 | 73 174 | 435 103 |
| June | 17 518 | 109 994 | 14 728 | 8 622 | 26 545 | 116 851 | 71 909 | 79 700 | 461 726 |
| 2001-02 | | | | | | | | | |
| July | 14 737 | 27 393 | 19 654 | 7 571 | 28 988 | 99 212 | 74 725 | 89 591 | 378 429 |
| August | 19 403 | 139 722 | 19 498 | 10 687 | 29 850 | 139 734 | 98 097 | 111 202 | 584 399 |
| September | 17 922 | 172 850 | 19 524 | 7 687 | 25 943 | 104 533 | 68 422 | 92 551 | 523 420 |
| October | 23 691 | 64 019 | 19 978 | 9 154 | 33 610 | 159 511 | 82 349 | 91 465 | 497 622 |
| November | 25 109 | 14 300 | 20 973 | 10 967 | 25 386 | 130 039 | 66 386 | 95 247 | 407 011 |
| December | 17 240 | 79 472 | 18 244 | 6 181 | 22 978 | 100 133 | 52 322 | 70 121 | 380 762 |

(a) Restrictions are placed on the release of statistics for certain commodities for reasons of confidentiality. These restrictions do not affect total export and import figures, but they can affect some items within commodity, industry and country tables. See *International Trade* (Cat. no. 5422.0), Explanatory Notes, paragraph 30, for more details.

(b) Includes other commodity groups not listed.

Source: ABS data available on request.

8

TURNOVER OF RETAIL ESTABLISHMENTS, BY INDUSTRY—TREND

| Period | Food retailing | Department stores | Clothing and soft good retailing | Household good retailing | Recreational good retailing | Other retailing | Hospitality and services | Total |
|----------------|-------------------|----------------------|---|--------------------------------|-----------------------------------|--------------------|--------------------------------|---------|
| | \$m | \$m | \$m | \$m | \$m | \$m | \$m | \$m |
| 2000-01 | | | | | | | | |
| October | 385.8 | 93.5 | 49.4 | 97.1 | 25.4 | 109.8 | 172.1 | 934.7 |
| November | 388.3 | 93.4 | 50.0 | 97.0 | 25.2 | 111.9 | 174.6 | 942.0 |
| December | 391.9 | 93.7 | 50.5 | 97.3 | 25.0 | 113.6 | 177.0 | 950.5 |
| January | 395.6 | 94.4 | 50.7 | 98.4 | 25.0 | 115.4 | 178.4 | 959.3 |
| February | 399.2 | 95.1 | 50.6 | 100.5 | 25.0 | 117.6 | 178.4 | 967.8 |
| March | 403.0 | 95.6 | 50.5 | 103.2 | 25.2 | 119.9 | 177.7 | 976.8 |
| April | 407.1 | 95.7 | 50.3 | 106.0 | 28.1 | 122.4 | 177.6 | 986.6 |
| May | 411.7 | 95.3 | 50.2 | 108.4 | 28.4 | 124.9 | 178.8 | 997.6 |
| June | 416.6 | 94.6 | 50.2 | 110.1 | 28.3 | 127.2 | 181.4 | 1 008.8 |
| 2001-02 | | | | | | | | |
| July | 421.4 | 94.1 | 50.3 | 110.9 | 28.0 | 129.0 | 184.2 | 1 018.4 |
| August | 426.0 | 94.1 | 50.4 | 111.0 | 27.6 | 130.1 | 186.4 | 1 025.7 |
| September | 430.2 | 94.7 | 50.6 | 111.1 | 27.2 | 130.6 | 187.0 | 1 031.3 |
| October | 433.8 | 95.7 | 50.7 | 111.4 | 27.0 | 130.5 | 186.5 | 1 035.5 |
| November | 436.8 | 96.8 | 50.9 | 111.7 | 27.1 | 130.0 | 185.4 | 1 038.9 |
| December | 438.9 | 97.9 | 50.9 | 112.0 | 27.2 | 129.1 | 184.0 | 1 041.1 |

Source: Retail Trade, Australia (Cat. no. 8501.0).

9

NEW MOTOR VEHICLE REGISTRATIONS, BY TYPE OF VEHICLE

| Period | Original | | | Seasonally adjusted | | | Trend estimate | | |
|----------------|-----------------------|-------------------|-------|-----------------------|-------------------|-------|-----------------------|-------------------|-------|
| | Passenger vehicles | Other vehicles | Total | Passenger vehicles | Other vehicles | Total | Passenger vehicles | Other vehicles | Total |
| 2000-01 | | | | | | | | | |
| October | 3 747 | 494 | 4 241 | 3 733 | 545 | 4 278 | 3 724 | 592 | 4 316 |
| November | 3 997 | 537 | 4 534 | 3 649 | 562 | 4 211 | 3 698 | 607 | 4 305 |
| December | 3 991 | 658 | 4 649 | 4 001 | 623 | 4 624 | 3 653 | 624 | 4 277 |
| January | 2 857 | 579 | 3 436 | 3 546 | 752 | 4 298 | 3 578 | 635 | 4 213 |
| February | 3 069 | 568 | 3 637 | 3 219 | 607 | 3 826 | 3 487 | 637 | 4 124 |
| March | 3 509 | 660 | 4 169 | 3 386 | 612 | 3 998 | 3 415 | 635 | 4 050 |
| April | 3 121 | 547 | 3 668 | 3 491 | 618 | 4 109 | 3 371 | 632 | 4 003 |
| May | 3 488 | 680 | 4 168 | 3 404 | 627 | 4 031 | 3 368 | 631 | 3 999 |
| June | 3 729 | 856 | 4 585 | 3 313 | 622 | 3 935 | 3 400 | 643 | 4 043 |
| 2001-02 | | | | | | | | | |
| July | 3 549 | 724 | 4 273 | 3 439 | 714 | 4 153 | 3 443 | 664 | 4 107 |
| August | 3 645 | 660 | 4 305 | 3 443 | 656 | 4 099 | 3 470 | 684 | 4 154 |
| September | 3 254 | 611 | 3 865 | 3 556 | 692 | 4 248 | 3 491 | 698 | 4 189 |
| October | 3 701 | 659 | 4 360 | 3 599 | 711 | 4 310 | 3 502 | 707 | 4 209 |
| November | 3 889 | 778 | 4 667 | 3 456 | 782 | 4 238 | 3 502 | 712 | 4 214 |
| December | 3 431 | 680 | 4 111 | 3 405 | 644 | 4 049 | 3 495 | 713 | 4 208 |

Source: New Motor Vehicle Registrations, Australia, Preliminary (Cat. no. 9301.0) and ABS data available on request.

10

ACTUAL PRIVATE NEW CAPITAL EXPENDITURE, BY SELECTED INDUSTRY AND TYPE OF ASSET

| Period | Industry | | | Total | Type of asset | |
|---------------------------|----------|---------------|---------------------------|-------|------------------------------|--------------------------------|
| | Mining | Manufacturing | Other selected industries | | New buildings and structures | Equipment, plant and machinery |
| ANNUAL (\$m) | | | | | | |
| 1998-99 | 508 | 776 | 993 | 2 277 | 529 | 1 748 |
| 1999-00 | 242 | 853 | 1 355 | 2 451 | 619 | 1 832 |
| 2000-01 | 419 | 816 | 1 415 | 2 650 | 656 | 1 994 |
| QUARTERLY, ORIGINAL (\$m) | | | | | | |
| 1999-00 | | | | | | |
| June | 67 | 251 | 375 | 692 | 220 | 472 |
| 2000-01 | | | | | | |
| September | 126 | 208 | 316 | 649 | 180 | 469 |
| December | 183 | 221 | 445 | 849 | 264 | 585 |
| March | 48 | 187 | 355 | 590 | 105 | 485 |
| June | 62 | 201 | 299 | 561 | 107 | 455 |
| 2000-02 | | | | | | |
| September | 75 | 185 | 308 | 567 | 125 | 442 |
| QUARTERLY, TREND (\$m) | | | | | | |
| 1999-00 | | | | | | |
| June | n.a. | n.a. | n.a. | 671 | 199 | 472 |
| 2000-01 | | | | | | |
| September | n.a. | n.a. | n.a. | 723 | 215 | 508 |
| December | n.a. | n.a. | n.a. | 701 | 189 | 512 |
| March | n.a. | n.a. | n.a. | 651 | 149 | 502 |
| June | n.a. | n.a. | n.a. | 599 | 119 | 480 |
| 2001-02 | | | | | | |
| September | n.a. | n.a. | n.a. | 570 | 108 | 462 |

Source: State Estimates of Private New Capital Expenditure (Cat. no. 5646.0).

11

TOURIST ACCOMMODATION

| Period | Licensed hotels with facilities | | | | Motels and guesthouses | | | | Serviced apartments | | | |
|----------------|---------------------------------|-------------|-----------------|---------|------------------------|-------------|-----------------|---------|---------------------|-------------|-----------------|---------|
| | Estab-lish-ments | Guest rooms | Room occu-pancy | Takings | Estab-lish-ments | Guest rooms | Room occu-pancy | Takings | Estab-lish-ments | Guest rooms | Room occu-pancy | Takings |
| | no. | no. | % | \$'000 | no. | no. | % | \$'000 | no. | no. | % | \$'000 |
| 1999-00 | | | | | | | | | | | | |
| September | 62 | 3 988 | 58.0 | 20 959 | 146 | 5 175 | 50.7 | 17 812 | 23 | 1 084 | 60.2 | 5 265 |
| December | 62 | 4 090 | 61.6 | 24 619 | 146 | 5 166 | 55.1 | 19 928 | 26 | 1 207 | 61.5 | 6 462 |
| March | 62 | 4 065 | 60.1 | 23 739 | 146 | 5 168 | 55.3 | 19 956 | 26 | 1 213 | 62.6 | 6 739 |
| June | 60 | 4 037 | 58.7 | 23 033 | 147 | 5 212 | 53.1 | 19 309 | 26 | 1 208 | 62.7 | 6 912 |
| 2000-01 | | | | | | | | | | | | |
| September | 60 | 4 070 | 56.3 | 23 960 | 147 | 5 218 | 50.6 | 19 898 | 26 | 1 211 | 56.9 | 6 252 |
| December | 62 | 4 128 | 58.2 | 26 070 | 146 | 5 204 | 54.4 | 21 557 | 26 | 1 220 | 62.4 | 7 232 |
| March | 62 | 3 905 | 59.9 | 25 686 | 146 | 5 217 | 55.2 | 21 889 | 27 | 1 280 | 67.1 | 7 955 |
| June | 61 | 4 066 | 55.9 | 23 849 | 146 | 5 230 | 50.5 | 20 289 | 27 | 1 300 | 63.2 | 7 959 |
| 2001-02 | | | | | | | | | | | | |
| September | 61 | 4 078 | 56.3 | 23 498 | 146 | 5 231 | 49.7 | 19 926 | 27 | 1 293 | 60.1 | 7 019 |

Source: Tourist Accommodation, Australia (Cat. no. 8635.0).

| Period | Houses | | Total dwelling units | | New residential building \$m | Alterations and additions to residential building \$m | Total residential building \$m | Non-residential building \$m | Total building \$m |
|-------------------|----------------|-------|----------------------|--------|---------------------------------|--|-----------------------------------|---------------------------------|-----------------------|
| | Private sector | Total | Private sector | Total | | | | | |
| | no. | no. | no. | no. | | | | | |
| ANNUAL | | | | | | | | | |
| 1998-99 | 6 568 | 6 777 | 7 697 | 7 928 | 775.6 | 144.0 | 919.6 | 670.9 | 1 590.5 |
| 1999-00 | 8 290 | 8 392 | 9 915 | 10 024 | 1 022.9 | 188.9 | 1 211.8 | 585.7 | 1 797.5 |
| 2000-01 | 5 550 | 5 639 | 6 654 | 6 770 | 735.6 | 157.3 | 892.9 | 717.8 | 1 610.7 |
| MONTHLY, ORIGINAL | | | | | | | | | |
| 2000-01 | | | | | | | | | |
| September | 353 | 353 | 409 | 409 | 42.1 | 12.6 | 54.7 | 29.4 | 84.1 |
| October | 434 | 434 | 510 | 514 | 55.6 | 13.1 | 68.7 | 45.3 | 114.0 |
| November | 458 | 462 | 650 | 661 | 63.4 | 15.0 | 78.3 | 49.6 | 127.9 |
| December | 381 | 398 | 439 | 458 | 49.4 | 12.1 | 61.4 | 52.6 | 114.1 |
| January | 364 | 364 | 423 | 432 | 46.5 | 13.5 | 60.0 | 35.2 | 95.3 |
| February | 380 | 385 | 464 | 469 | 50.4 | 13.8 | 64.2 | 36.6 | 100.8 |
| March | 516 | 522 | 629 | 635 | 67.2 | 14.0 | 81.2 | 141.9 | 223.2 |
| April | 475 | 492 | 496 | 515 | 56.3 | 10.8 | 67.1 | 40.5 | 107.6 |
| May | 655 | 659 | 705 | 709 | 79.3 | 16.9 | 96.1 | 95.7 | 191.8 |
| June | 641 | 644 | 733 | 736 | 84.2 | 14.3 | 98.5 | 40.8 | 139.3 |
| 2001-02 | | | | | | | | | |
| July | 765 | 771 | 966 | 975 | 98.3 | 15.9 | 114.2 | 45.9 | 160.1 |
| August | 734 | 741 | 808 | 825 | 86.3 | 17.0 | 103.3 | 118.4 | 221.7 |
| September | 712 | 731 | 840 | 863 | 95.9 | 14.5 | 110.3 | 48.3 | 158.6 |
| October | 778 | 797 | 877 | 904 | 98.0 | 19.6 | 117.7 | 81.9 | 199.6 |
| November | 764 | 810 | 881 | 931 | 100.4 | 16.1 | 116.5 | 57.3 | 173.8 |
| December | 698 | 744 | 922 | 968 | 107.9 | 13.0 | 120.9 | 42.9 | 163.7 |
| MONTHLY, TREND | | | | | | | | | |
| 2000-01 | | | | | | | | | |
| September | 409 | 417 | 510 | 520 | 54.5 | 11.6 | 66.1 | 49.2 | 115.2 |
| October | 406 | 412 | 516 | 525 | 54.4 | 12.2 | 66.6 | 48.8 | 115.4 |
| November | 409 | 414 | 523 | 532 | 54.9 | 13.1 | 68.0 | 47.4 | 115.4 |
| December | 414 | 419 | 528 | 537 | 55.6 | 13.7 | 69.3 | 45.5 | 114.8 |
| January | 423 | 429 | 528 | 538 | 56.9 | 14.0 | 70.9 | 44.8 | 115.7 |
| February | 442 | 449 | 533 | 543 | 59.0 | 14.1 | 73.2 | 45.4 | 118.5 |
| March | 475 | 482 | 549 | 557 | 61.9 | 14.3 | 76.2 | 47.3 | 123.6 |
| April | 525 | 532 | 585 | 593 | 66.0 | 14.5 | 80.5 | 50.0 | 130.4 |
| May | 586 | 592 | 644 | 651 | 71.7 | 14.8 | 86.5 | 53.5 | 140.0 |
| June | 644 | 650 | 706 | 714 | 77.6 | 15.0 | 92.7 | 57.9 | 150.6 |
| 2001-02 | | | | | | | | | |
| July | 690 | 697 | 761 | 772 | 83.2 | 15.3 | 98.5 | 62.0 | 160.5 |
| August | 718 | 730 | 809 | 826 | 88.3 | 15.5 | 103.8 | 64.2 | 168.0 |
| September | 734 | 752 | 856 | 880 | 93.5 | 15.5 | 109.0 | 64.9 | 174.0 |
| October | 747 | 774 | 902 | 934 | 99.0 | 15.5 | 114.6 | 64.7 | 179.3 |
| November | 757 | 792 | 947 | 987 | 104.4 | 15.5 | 119.9 | 63.3 | 183.2 |
| December | 764 | 806 | 990 | 1036 | 109.3 | 15.5 | 124.8 | 61.9 | 186.7 |

Source: Building Approvals, Australia (Cat. no. 8731.0) and ABS data available on request.

13

BUILDING COMMENCEMENTS

| Period | New houses | | Total dwelling units(a) | | New residential building \$m | Alterations and additions to residential building \$m | Non-residential building | | |
|----------------|----------------|-------|-------------------------|-------|---------------------------------|--|--------------------------|-------|----------------|
| | Private sector | Total | Private sector | Total | | | Private sector | Total | Total building |
| | no. | no. | no. | no. | | | \$m | \$m | \$m |
| 1998-99 | 6 092 | 6 297 | 7 186 | 7 416 | 771.3 | 139.7 | 400.7 | 624.3 | 1 535.3 |
| 1999-00 | 7 729 | 7 856 | 9 266 | 9 410 | 1 044.8 | 198.8 | 351.2 | 576.8 | 1 820.5 |
| 2000-01 | 5 303 | 5 390 | 6 442 | 6 556 | 779.2 | 161.3 | 390.5 | 729.6 | 1 670.1 |
| 1999-00 | | | | | | | | | |
| September | 1 752 | 1 792 | 2 116 | 2 166 | 251.2 | 42.6 | 84.1 | 109.3 | 403.1 |
| December | 1 947 | 2 007 | 2 264 | 2 327 | 250.9 | 45.2 | 92.7 | 132.2 | 428.3 |
| March | 2 054 | 2 064 | 2 534 | 2 544 | 284.9 | 52.1 | 70.8 | 182.9 | 519.9 |
| June | 1 977 | 1 994 | 2 353 | 2 374 | 257.8 | 58.9 | 103.6 | 152.5 | 469.2 |
| 2000-01 | | | | | | | | | |
| September | 1 380 | 1 419 | 1 777 | 1 819 | 228.9 | 25.6 | 104.8 | 166.3 | 420.8 |
| December | 1 345 | 1 350 | 1 498 | 1 512 | 167.8 | 44.3 | 122.8 | 151.4 | 363.5 |
| March | 1 157 | 1 179 | 1 562 | 1 597 | 186.5 | 43.6 | 70.9 | 111.2 | 341.2 |
| June | 1 422 | 1 443 | 1 605 | 1 628 | 196.0 | 47.9 | 91.9 | 300.7 | 544.6 |
| 2001-02 | | | | | | | | | |
| September | 1 829 | 1 851 | 2 366 | 2 401 | 316.4 | 44.7 | 143.1 | 187.2 | 548.3 |

(a) Includes conversions.

Source: Building Activity, Australia (Cat. no. 8752.0).

VALUE OF BUILDING WORK DONE AND COMPLETED DURING PERIOD

| Period | New houses | | New residential building | | Alterations and additions to residential building | Total residential building | Non-residential building | | Total building | |
|----------------------------------|----------------|-------|--------------------------|-------|---|----------------------------|--------------------------|-------|----------------|---------|
| | Private sector | Total | Private sector | Total | | | Private sector | Total | Private sector | Total |
| | \$m | \$m | \$m | \$m | \$m | \$m | \$m | \$m | \$m | \$m |
| VALUE OF BUILDING WORK DONE | | | | | | | | | | |
| 1998-99 | 599.4 | 614.6 | 720.8 | 737.7 | 147.7 | 885.4 | 417.1 | 571.6 | 1 283.8 | 1 457.0 |
| 1999-00 | 798.1 | 812.2 | 984.5 | 999.9 | 195.5 | 1195.4 | 409.9 | 629.4 | 1 585.1 | 1 824.8 |
| 2000-01 | 679.7 | 686.9 | 835.5 | 845.0 | 161.9 | 1006.8 | 395.0 | 624.0 | 1 385.4 | 1 630.9 |
| 1999-00 | | | | | | | | | | |
| September | 166.8 | 171.9 | 212.6 | 218.4 | 41.3 | 259.8 | 116.7 | 171.6 | 369.4 | 431.3 |
| December | 187.5 | 192.0 | 227.3 | 232.1 | 46.8 | 278.9 | 101.0 | 149.2 | 374.3 | 428.1 |
| March | 193.0 | 196.1 | 239.4 | 242.6 | 47.2 | 289.9 | 86.3 | 145.3 | 372.4 | 435.2 |
| June | 250.8 | 252.2 | 305.1 | 306.8 | 60.1 | 366.9 | 105.9 | 163.3 | 469.1 | 530.2 |
| 2000-01 | | | | | | | | | | |
| September | 175.9 | 178.2 | 228.3 | 230.7 | 30.9 | 261.5 | 84.0 | 138.2 | 341.8 | 399.7 |
| December | 179.6 | 180.9 | 216.0 | 218.3 | 42.1 | 260.4 | 116.6 | 176.1 | 372.9 | 436.5 |
| March | 162.6 | 164.0 | 193.8 | 195.7 | 40.7 | 236.4 | 97.2 | 145.7 | 330.1 | 382.1 |
| June | 161.6 | 163.8 | 197.3 | 200.3 | 48.2 | 248.6 | 97.2 | 163.9 | 340.6 | 412.5 |
| 2001-02 | | | | | | | | | | |
| September | 185.0 | 188.0 | 228.4 | 231.9 | 48.6 | 280.5 | 110.9 | 169.9 | 385.7 | 450.4 |
| VALUE OF BUILDING WORK COMPLETED | | | | | | | | | | |
| 1998-99 | 600.6 | 614.8 | 700.0 | 715.2 | 153.2 | 868.4 | 505.3 | 639.4 | 1356.8 | 1 507.8 |
| 1999-00 | 713.5 | 730.1 | 867.6 | 886.2 | 191.9 | 1 078.1 | 362.9 | 538.4 | 1419.4 | 1 616.4 |
| 2000-01 | 758.7 | 763.6 | 942.8 | 949.0 | 154.4 | 1 103.4 | 436.3 | 591.5 | 1526.5 | 1 694.9 |
| 1999-00 | | | | | | | | | | |
| September | 148.9 | 154.7 | 170.2 | 177.7 | 38.5 | 216.2 | 67.9 | 104.1 | 275.4 | 320.2 |
| December | 190.6 | 195.1 | 221.7 | 226.5 | 45.5 | 272.0 | 124.7 | 161.8 | 391.3 | 433.8 |
| March | 156.0 | 160.2 | 177.8 | 182.0 | 42.2 | 224.2 | 100.8 | 150.4 | 320.0 | 374.6 |
| June | 217.9 | 220.1 | 297.9 | 300.1 | 65.7 | 365.8 | 69.6 | 122.0 | 432.8 | 487.8 |
| 2000-01 | | | | | | | | | | |
| September | 175.5 | 176.2 | 199.0 | 199.9 | 31.4 | 231.4 | 133.2 | 180.5 | 362.5 | 411.9 |
| December | 222.2 | 224.8 | 313.7 | 317.3 | 35.8 | 353.1 | 82.8 | 107.7 | 430.7 | 460.8 |
| March | 173.0 | 174.3 | 216.4 | 217.9 | 34.9 | 252.8 | 82.4 | 138.5 | 330.9 | 391.2 |
| June | 188.0 | 188.3 | 213.7 | 213.9 | 52.2 | 266.1 | 137.9 | 164.9 | 402.4 | 431.0 |
| 2001-02 | | | | | | | | | | |
| September | 149.9 | 153.2 | 173.1 | 177.6 | 54.5 | 232.1 | 74.3 | 119.7 | 298.8 | 351.8 |

Source: Building Activity, Australia (Cat. no. 8752.0).

| <i>Period</i> | <i>Pigmeat</i> <i>tonnes</i> | <i>Beef</i> <i>tonnes</i> | <i>Mutton</i> <i>tonnes</i> | <i>Lamb</i> <i>tonnes</i> | <i>Sawn timber(a)</i> <i>m³</i> |
|----------------|---------------------------------|------------------------------|--------------------------------|------------------------------|---|
| 1998-99 | 30 864 | 62 266 | 48 029 | 44 173 | 374 590 |
| 1999-00 | 31 927 | 78 001 | 28 970 | 56 668 | 425 549 |
| 2000-01 | 36 679 | 82 532 | 36 104 | 61 893 | 389 417 |
| 1999-00 | | | | | |
| December | 7 504 | 18 401 | 8 714 | 11 944 | 93 802 |
| March | 8 245 | 21 743 | 8 810 | 14 475 | 112 949 |
| June | 8 884 | 20 750 | 5 792 | 18 757 | 107 723 |
| 2000-01 | | | | | |
| September | 8 227 | 18 011 | 8 072 | 15 785 | 126 440 |
| December | 8 143 | 21 982 | 9 826 | 15 689 | 89 486 |
| March | 9 785 | 23 367 | 9 885 | 14 968 | 75 558 |
| June | 10 524 | 19 172 | 8 321 | 15 451 | 97 933 |
| 2001-02 | | | | | |
| September | 10 274 | 18 271 | 6 290 | 11 694 | 103 774 |
| December | 8 984 | 21 332 | 8 221 | 17 627 | 111 797 |

(a) From Australian softwood logs only.

Source: *Livestock Products, Australia* (Cat. no. 7215.0) and ABS data available on request.

| <i>Period</i> | <i>Food</i> | <i>Alcohol and tobacco</i> | <i>Clothing and footwear</i> | <i>Housing</i> | <i>House furnishings, supplies and services</i> | <i>Health</i> | <i>Transportation</i> | <i>Communication</i> | <i>Recreation</i> | <i>Education</i> | <i>Miscellaneous</i> | <i>All groups</i> |
|--|-------------|----------------------------|------------------------------|----------------|---|---------------|-----------------------|----------------------|-------------------|------------------|----------------------|-------------------|
| ANNUAL AVERAGE (1989-90 = 100.0) | | | | | | | | | | | | |
| 1998-99 | 127.7 | 171.8 | 105.0 | 92.0 | 113.3 | 176.0 | 121.6 | 101.9 | 117.9 | 204.8 | 142.7 | 123.2 |
| 1999-00 | 130.8 | 179.1 | 103.3 | 97.0 | 112.9 | 165.7 | 129.4 | 97.7 | 119.1 | 215.8 | 148.8 | 126.3 |
| 2000-01 | 136.7 | 198.3 | 111.9 | 104.3 | 117.1 | 169.5 | 138.0 | 104.7 | 122.9 | 225.9 | 159.3 | 133.5 |
| QUARTERLY (1989-90 = 100.0) | | | | | | | | | | | | |
| 2000-01 | | | | | | | | | | | | |
| September | 133.8 | 193.4 | 113.6 | 103.9 | 116.0 | 168.5 | 136.8 | 105.5 | 122.7 | 220.9 | 157.8 | 132.3 |
| December | 134.2 | 196.0 | 111.2 | 103.9 | 115.8 | 167.6 | 137.6 | 105.0 | 123.4 | 220.9 | 158.3 | 132.5 |
| March | 139.4 | 200.5 | 110.5 | 104.4 | 117.4 | 170.7 | 137.0 | 104.3 | 123.0 | 230.9 | 159.9 | 134.1 |
| June | 139.4 | 203.3 | 112.3 | 104.9 | 119.3 | 171.3 | 140.4 | 103.9 | 122.5 | 230.9 | 161.2 | 135.1 |
| 2001-02 | | | | | | | | | | | | |
| September | 140.5 | 205.9 | 108.4 | 106.8 | 120.6 | 170.9 | 136.4 | 103.6 | 123.1 | 231.0 | 163.5 | 135.3 |
| December | 143.8 | 205.5 | 112.2 | 107.9 | 120.9 | 169.3 | 134.4 | 106.0 | 125.6 | 231.1 | 163.8 | 136.6 |
| PERCENTAGE CHANGE FROM SAME QUARTER OF PREVIOUS YEAR | | | | | | | | | | | | |
| 2000-01 | | | | | | | | | | | | |
| September | 3.2 | 10.9 | 8.4 | 9.4 | 3.1 | 2.4 | 7.4 | 8.0 | 2.5 | 4.8 | 10.2 | 5.8 |
| December | 2.9 | 10.2 | 8.5 | 7.2 | 2.8 | 2.4 | 8.0 | 8.0 | 3.1 | 4.8 | 7.4 | 5.4 |
| March | 6.3 | 10.4 | 8.4 | 6.6 | 4.0 | 2.4 | 5.1 | 7.5 | 3.8 | 4.6 | 6.2 | 5.8 |
| June | 5.7 | 11.4 | 8.0 | 6.7 | 5.2 | 2.0 | 6.4 | 5.3 | 3.3 | 4.6 | 4.7 | 5.9 |
| 2001-02 | | | | | | | | | | | | |
| September | 5.0 | 6.5 | -4.6 | 2.8 | 4.0 | 1.4 | -0.3 | 1.8 | 0.3 | 4.6 | 3.6 | 2.3 |
| December | 7.2 | 4.8 | 0.9 | 3.8 | 4.4 | 1.0 | -2.3 | 1.0 | 1.8 | 4.6 | 3.5 | 3.1 |
| PERCENTAGE CHANGE FROM PREVIOUS QUARTER | | | | | | | | | | | | |
| 2000-01 | | | | | | | | | | | | |
| September | 1.4 | 6.0 | 9.2 | 5.7 | 2.3 | 0.4 | 3.7 | 6.9 | 3.5 | 0.1 | 2.5 | 3.7 |
| December | 0.3 | 1.3 | -2.1 | 0.0 | -0.2 | -0.5 | 0.6 | -0.5 | 0.6 | 0.0 | 0.3 | 0.2 |
| March | 3.9 | 2.3 | -0.6 | 0.5 | 1.4 | 1.8 | -0.4 | -0.7 | -0.3 | 4.5 | 1.0 | 1.2 |
| June | 0.0 | 0.9 | 1.6 | 0.5 | 1.6 | 0.4 | 2.5 | -0.4 | -0.4 | 0.0 | 0.8 | 0.7 |
| 2001-02 | | | | | | | | | | | | |
| September | 0.8 | 1.3 | -3.4 | 1.8 | 1.1 | -0.2 | -2.8 | -0.3 | 0.5 | 0.0 | 1.4 | 0.1 |
| December | 2.3 | -0.2 | 3.5 | 1.0 | 0.2 | -0.9 | -1.5 | 2.3 | 2.0 | 0.0 | 0.2 | 1.0 |

Source: Consumer Price Index (Cat. no. 6401.0).

17

ESTIMATED RESIDENT POPULATION AND COMPONENTS OF POPULATION CHANGE

| Period | Net migration | | | Total increase | Population at end of period |
|----------------|------------------|------------|-------------|----------------|-----------------------------|
| | Natural increase | Interstate | Overseas(a) | | |
| 1998-99 | 6 751 | -2 869 | 2 108 | 5 990 | 1 492 408 |
| 1999-00 | 6 306 | -4 773 | 3 453 | 4 986 | 1 497 394 |
| 2000-01 | 5 635 | -4 234 | 3 602 | 5 003 | 1 502 397 |
| 1999-00 | | | | | |
| September | 1 419 | -600 | 992 | 1 811 | 1 494 219 |
| December | 1 611 | -1 291 | 1 643 | 1 963 | 1 496 182 |
| March | 1 828 | -1 735 | 662 | 755 | 1 496 937 |
| June | 1 448 | -1 147 | 156 | 457 | 1 497 394 |
| 2000-01 | | | | | |
| September | 1 121 | -1 030 | 924 | 1 015 | 1 498 409 |
| December | 1 490 | -1 308 | 1 660 | 1 842 | 1 500 251 |
| March | 1 740 | -1 264 | 655 | 1 131 | 1 501 382 |
| June | 1 284 | -632 | 363 | 1 015 | 1 502 397 |

(a) Includes category jumping.

Source: Australian Demographic Statistics (Cat. no. 3101.0).

18

BIRTHS, DEATHS, MARRIAGES AND DIVORCES

| Period | Registrations | | | |
|----------------|---------------|--------|-----------|----------|
| | Births | Deaths | Marriages | Divorces |
| 1998-99 | 18 399 | 11 648 | 8 034 | 4 191 |
| 1999-00 | 17 896 | 11 590 | 8 428 | 4 197 |
| 2000-01 | 17 449 | 11 814 | 7 689 | 4 072 |
| 1999-00 | | | | |
| September | 4 600 | 3 181 | 1 259 | 1 058 |
| December | 4 371 | 2 760 | 2 737 | 1 190 |
| March | 4 476 | 2 648 | 2 436 | 965 |
| June | 4 449 | 3 001 | 1 996 | 984 |
| 2000-01 | | | | |
| September | 4 360 | 3 239 | 1 092 | 1 056 |
| December | 4 319 | 2 829 | 2 703 | 1 031 |
| March | 4 549 | 2 809 | 2 175 | 824 |
| June | 4 221 | 2 937 | 1 719 | 1 161 |

Source: Australian Demographic Statistics (Cat. no. 3101.0).

| Period | Employed full-time | | Employed part-time | | Total employed | | Unemployed | | Labour force | |
|--------------------------|--------------------|---------|--------------------|---------|----------------|---------|------------|---------|--------------|---------|
| | Males | Females | Males | Females | Males | Females | Males | Females | Males | Females |
| ANNUAL AVERAGE ('000) | | | | | | | | | | |
| 1998-99 | 319.7 | 148.2 | 49.6 | 137.2 | 369.3 | 285.4 | 39.3 | 25.3 | 408.6 | 310.6 |
| 1999-00 | 322.1 | 152.5 | 56.1 | 142.3 | 378.2 | 294.9 | 34.6 | 23.9 | 412.8 | 318.7 |
| 2000-01 | 322.6 | 156.7 | 54.8 | 143.5 | 377.4 | 300.2 | 32.6 | 20.2 | 410.0 | 320.4 |
| MONTHLY, ORIGINAL ('000) | | | | | | | | | | |
| 2000-01 | | | | | | | | | | |
| November | 327.3 | 157.1 | 52.2 | 142.5 | 379.5 | 299.6 | 31.8 | 20.4 | 411.3 | 320.0 |
| December | 328.8 | 159.5 | 51.1 | 143.3 | 380.0 | 302.8 | 32.3 | 20.0 | 412.2 | 322.8 |
| January | 320.5 | 157.3 | 55.0 | 134.0 | 375.4 | 291.3 | 34.7 | 20.8 | 410.1 | 312.1 |
| February | 321.0 | 157.4 | 54.3 | 143.4 | 375.3 | 300.8 | 34.8 | 20.4 | 410.1 | 321.2 |
| March | 311.6 | 156.0 | 57.5 | 145.9 | 369.1 | 301.8 | 32.6 | 18.3 | 401.7 | 320.2 |
| April | 314.3 | 151.8 | 57.1 | 150.6 | 371.4 | 302.5 | 34.2 | 19.4 | 405.6 | 321.9 |
| May | 316.3 | 154.8 | 55.1 | 146.2 | 371.3 | 301.0 | 35.5 | 20.5 | 406.9 | 321.4 |
| June | 313.5 | 152.7 | 58.6 | 150.1 | 372.1 | 302.8 | 30.5 | 20.9 | 402.6 | 323.7 |
| 2001-02 | | | | | | | | | | |
| July | 316.2 | 156.5 | 54.8 | 144.8 | 371.0 | 301.3 | 33.2 | 19.4 | 404.2 | 320.7 |
| August | 317.2 | 150.9 | 56.2 | 149.4 | 373.4 | 300.3 | 31.9 | 20.5 | 405.3 | 320.7 |
| September | 318.2 | 158.3 | 57.3 | 147.4 | 375.5 | 305.7 | 32.2 | 20.5 | 407.6 | 326.2 |
| October | 317.7 | 154.6 | 56.9 | 150.9 | 374.6 | 305.5 | 32.4 | 18.6 | 407.1 | 324.1 |
| November | 319.4 | 159.8 | 56.2 | 151.6 | 375.6 | 311.4 | 32.1 | 16.9 | 407.6 | 328.3 |
| December | 322.1 | 158.8 | 59.6 | 151.1 | 381.7 | 309.9 | 32.0 | 20.2 | 413.8 | 330.1 |
| January | 322.1 | 151.4 | 56.9 | 147.3 | 379.0 | 298.8 | 33.4 | 22.8 | 412.4 | 321.6 |
| MONTHLY, TREND ('000) | | | | | | | | | | |
| 2000-01 | | | | | | | | | | |
| November | 326.1 | 157.5 | 54.1 | 140.2 | 380.2 | 297.7 | 31.5 | 20.4 | 411.7 | 318.1 |
| December | 324.0 | 156.6 | 54.0 | 141.1 | 378.0 | 297.7 | 31.8 | 19.7 | 409.8 | 317.4 |
| January | 321.6 | 155.9 | 54.2 | 142.5 | 375.8 | 298.4 | 32.2 | 19.1 | 408.0 | 317.5 |
| February | 319.3 | 155.6 | 54.6 | 144.2 | 373.9 | 299.8 | 32.7 | 18.8 | 406.6 | 318.6 |
| March | 317.4 | 155.5 | 55.0 | 146.0 | 372.4 | 301.5 | 33.4 | 18.8 | 405.8 | 320.3 |
| April | 316.1 | 155.5 | 55.4 | 147.3 | 371.5 | 302.8 | 34.0 | 19.3 | 405.5 | 322.1 |
| May | 315.4 | 155.3 | 55.8 | 148.1 | 371.2 | 303.4 | 34.3 | 20.0 | 405.5 | 323.4 |
| June | 315.4 | 155.2 | 56.1 | 148.4 | 371.5 | 303.6 | 34.3 | 20.6 | 405.8 | 324.2 |
| 2001-02 | | | | | | | | | | |
| July | 315.7 | 155.4 | 56.5 | 148.1 | 372.2 | 303.5 | 33.9 | 20.9 | 406.1 | 324.4 |
| August | 316.3 | 155.6 | 56.9 | 147.8 | 373.2 | 303.4 | 33.3 | 20.8 | 406.5 | 324.2 |
| September | 316.9 | 155.8 | 57.4 | 147.8 | 374.3 | 303.6 | 32.7 | 20.4 | 407.0 | 324.0 |
| October | 317.8 | 155.7 | 57.7 | 148.2 | 375.5 | 303.9 | 32.2 | 20.0 | 407.7 | 323.9 |
| November | 318.9 | 155.4 | 58.0 | 149.0 | 376.9 | 304.4 | 31.8 | 19.8 | 408.7 | 324.2 |
| December | 320.1 | 154.9 | 58.1 | 149.8 | 378.2 | 304.7 | 31.5 | 19.7 | 409.7 | 324.4 |
| January | 321.1 | 154.3 | 58.3 | 150.8 | 379.4 | 305.1 | 31.1 | 19.8 | 410.5 | 324.9 |

(a) Population aged 15 years and over.

Source: Labour Force, Australia, Preliminary (Cat. no. 6202.0).

| Period | Civilian population | | | Unemployment rate | | | Participation rate | | |
|-------------------|------------------------|--------------------------|--------------------|-------------------|------------------|------------------|--------------------|---------|---------|
| | Males aged 15 and over | Females aged 15 and over | Persons aged 15-19 | Males all ages | Females all ages | Persons all ages | Males | Females | Persons |
| | '000 | '000 | % | % | % | % | % | % | % |
| ANNUAL AVERAGE | | | | | | | | | |
| 1998-99 | 583.2 | 609.8 | 21.7 | 9.6 | 8.1 | 9.0 | 70.1 | 50.9 | 60.3 |
| 1999-00 | 587.6 | 613.8 | 20.9 | 8.4 | 7.5 | 8.0 | 70.3 | 51.9 | 60.9 |
| 2000-01 | 591.6 | 616.9 | 18.5 | 8.0 | 6.3 | 7.2 | 69.3 | 51.9 | 60.4 |
| MONTHLY, ORIGINAL | | | | | | | | | |
| 2000-01 | | | | | | | | | |
| November | 591.3 | 616.6 | 18.2 | 7.7 | 6.4 | 7.1 | 69.6 | 51.9 | 60.5 |
| December | 591.5 | 616.9 | 20.7 | 7.8 | 6.2 | 7.1 | 69.7 | 52.3 | 60.8 |
| January | 591.8 | 617.0 | 20.6 | 8.5 | 6.7 | 7.7 | 69.3 | 50.6 | 59.7 |
| February | 592.0 | 617.2 | 18.8 | 8.5 | 6.4 | 7.5 | 69.3 | 52.0 | 60.5 |
| March | 592.3 | 617.4 | 17.7 | 8.1 | 5.7 | 7.1 | 67.8 | 51.9 | 59.7 |
| April | 592.6 | 617.6 | 17.8 | 8.4 | 6.0 | 7.4 | 68.5 | 52.1 | 60.1 |
| May | 592.9 | 617.9 | 21.1 | 8.7 | 6.4 | 7.7 | 68.6 | 52.0 | 60.2 |
| June | 593.1 | 618.2 | 17.1 | 7.6 | 6.4 | 7.1 | 67.9 | 52.4 | 60.0 |
| 2001-02 | | | | | | | | | |
| July | 593.5 | 618.6 | 17.6 | 8.2 | 6.1 | 7.3 | 68.1 | 51.9 | 59.8 |
| August | 593.9 | 619.0 | 17.9 | 7.9 | 6.4 | 7.2 | 68.2 | 51.8 | 59.9 |
| September | 594.3 | 619.4 | 17.0 | 7.9 | 6.3 | 7.2 | 68.6 | 52.7 | 60.5 |
| October | 594.5 | 619.6 | 18.9 | 8.0 | 5.7 | 7.0 | 68.5 | 52.3 | 60.2 |
| November | 594.8 | 619.9 | 16.5 | 7.9 | 5.2 | 6.7 | 68.5 | 53.0 | 60.6 |
| December | 595.1 | 620.1 | 20.9 | 7.7 | 6.1 | 7.0 | 69.5 | 53.2 | 61.2 |
| January | 595.5 | 620.5 | 24.4 | 8.1 | 7.1 | 7.7 | 69.3 | 51.8 | 60.4 |
| MONTHLY, TREND | | | | | | | | | |
| 2000-01 | | | | | | | | | |
| November | n.a. | n.a. | n.a. | 7.7 | 6.4 | 7.1 | 69.6 | 51.6 | 60.4 |
| December | n.a. | n.a. | n.a. | 7.8 | 6.2 | 7.1 | 69.3 | 51.5 | 60.2 |
| January | n.a. | n.a. | n.a. | 7.9 | 6.0 | 7.1 | 68.9 | 51.5 | 60.0 |
| February | n.a. | n.a. | n.a. | 8.1 | 5.9 | 7.1 | 68.7 | 51.6 | 60.0 |
| March | n.a. | n.a. | n.a. | 8.2 | 5.9 | 7.2 | 68.5 | 51.9 | 60.0 |
| April | n.a. | n.a. | n.a. | 8.4 | 6.0 | 7.3 | 68.4 | 52.1 | 60.1 |
| May | n.a. | n.a. | n.a. | 8.5 | 6.2 | 7.4 | 68.4 | 52.3 | 60.2 |
| June | n.a. | n.a. | n.a. | 8.4 | 6.4 | 7.5 | 68.4 | 52.4 | 60.3 |
| 2001-02 | | | | | | | | | |
| July | n.a. | n.a. | n.a. | 8.3 | 6.5 | 7.5 | 68.4 | 52.4 | 60.3 |
| August | n.a. | n.a. | n.a. | 8.2 | 6.4 | 7.4 | 68.5 | 52.4 | 60.3 |
| September | n.a. | n.a. | n.a. | 8.0 | 6.3 | 7.3 | 68.5 | 52.3 | 60.2 |
| October | n.a. | n.a. | n.a. | 7.9 | 6.2 | 7.1 | 68.6 | 52.3 | 60.3 |
| November | n.a. | n.a. | n.a. | 7.8 | 6.1 | 7.0 | 68.7 | 52.3 | 60.3 |
| December | n.a. | n.a. | n.a. | 7.7 | 6.1 | 7.0 | 68.8 | 52.3 | 60.4 |
| January | n.a. | n.a. | n.a. | 7.6 | 6.1 | 6.9 | 69.0 | 52.4 | 60.5 |

(a) Population aged 15 years and over.

Source: Labour Force, Australia, Preliminary (Cat. no. 6202.0).

| Period | Males | | | Females | | | Persons | | |
|-----------------------------------|--|--------------------------------|--------------------------|--|--------------------------------|----------------------------|--|--------------------------------|------------------------------|
| | Full-time adult ordinary time earnings | Full-time adult total earnings | All males total earnings | Full-time adult ordinary time earnings | Full-time adult total earnings | All females total earnings | Full-time adult ordinary time earnings | Full-time adult total earnings | All employees total earnings |
| ANNUAL AVERAGE (\$ per week) | | | | | | | | | |
| 1998-99 | 741.20 | 797.60 | 678.30 | 627.90 | 647.30 | 464.40 | 699.10 | 741.70 | 575.20 |
| 1999-00 | 756.80 | 812.50 | 695.00 | 641.70 | 663.30 | 457.20 | 714.40 | 757.50 | 575.90 |
| 2000-01 | 811.30 | 864.40 | 746.80 | 685.20 | 703.90 | 491.20 | 765.70 | 806.40 | 619.70 |
| QUARTERLY, ORIGINAL (\$ per week) | | | | | | | | | |
| 1999-00 | | | | | | | | | |
| May | 770.40 | 831.30 | 705.00 | 651.40 | 677.20 | 462.60 | 726.80 | 774.80 | 585.90 |
| 2000-01 | | | | | | | | | |
| August | 791.60 | 846.00 | 724.80 | 667.70 | 692.60 | 484.00 | 745.50 | 788.90 | 603.60 |
| November | 814.90 | 866.00 | 748.30 | 681.40 | 698.00 | 488.30 | 766.40 | 805.00 | 618.50 |
| February | 813.80 | 870.60 | 754.70 | 693.60 | 710.60 | 499.30 | 770.10 | 812.40 | 627.70 |
| May | 824.80 | 875.00 | 759.10 | 698.00 | 714.20 | 493.00 | 780.90 | 819.30 | 628.90 |
| 2001-02 | | | | | | | | | |
| August | 832.60 | 875.90 | 771.20 | 714.50 | 727.10 | 513.00 | 791.70 | 824.30 | 644.50 |
| QUARTERLY, TREND (\$ per week) | | | | | | | | | |
| 1999-00 | | | | | | | | | |
| May | 776.70 | 834.20 | 713.10 | 654.70 | 676.20 | 468.20 | 731.60 | 775.50 | 590.70 |
| 2000-01 | | | | | | | | | |
| August | 793.00 | 848.50 | 727.40 | 667.90 | 689.70 | 480.20 | 746.70 | 789.90 | 604.20 |
| November | 807.10 | 860.80 | 742.10 | 679.80 | 699.60 | 488.90 | 760.50 | 802.10 | 616.10 |
| February | 817.30 | 869.80 | 752.80 | 690.60 | 707.50 | 494.60 | 772.00 | 811.70 | 624.80 |
| May | 824.90 | 876.10 | 762.10 | 702.30 | 717.80 | 500.80 | 782.00 | 820.20 | 633.20 |
| 2001-02 | | | | | | | | | |
| August | 831.40 | 880.60 | 771.90 | 715.20 | 729.60 | 509.20 | 791.60 | 828.20 | 642.80 |

Source: Average Weekly Earnings, States and Australia (Cat. no. 6302.0).

22

SECURED HOUSING FINANCE COMMITMENTS(a)

| Period | Original | | Seasonally adjusted | | Trend | |
|----------------|----------------|-------|---------------------|-------|----------------|-------|
| | Dwelling units | Value | Dwelling units | Value | Dwelling units | Value |
| | no. | \$m | no. | \$m | no. | \$m |
| 2000-01 | | | | | | |
| October | 3 717 | 351 | 3 810 | 362 | 3 924 | 373 |
| November | 4 163 | 406 | 3 836 | 368 | 3 903 | 374 |
| December | 3 921 | 395 | 3 985 | 388 | 3 855 | 375 |
| January | 3 511 | 356 | 3 909 | 395 | 3 815 | 378 |
| February | 3 565 | 351 | 3 623 | 357 | 3 820 | 386 |
| March | 4 119 | 423 | 3 814 | 395 | 3 870 | 399 |
| April | 3 645 | 382 | 3 895 | 411 | 3 957 | 415 |
| May | 4 522 | 479 | 4 205 | 443 | 4 068 | 432 |
| June | 4 321 | 458 | 4 165 | 454 | 4 176 | 447 |
| 2001-02 | | | | | | |
| July | 4 290 | 462 | 4 308 | 469 | 4 254 | 457 |
| August | 4 324 | 455 | 4 326 | 457 | 4 292 | 463 |
| September | 3 849 | 414 | 4 324 | 467 | 4 310 | 468 |
| October | 4 334 | 473 | 4 216 | 457 | 4 330 | 473 |
| November | 4 695 | 525 | 4 338 | 485 | 4 350 | 479 |
| December | 4 400 | 505 | 4 458 | 497 | 4 375 | 484 |

(a) Excludes alterations and additions. Includes refinancing.

Source: Housing Finance for Owner Occupation, Australia (Cat. no. 5609.0).

23

FINANCE COMMITMENTS

| Period | Commercial finance commitments | | | Personal finance commitments | | | |
|----------------|--------------------------------|-----------------------------|--------------------------------------|------------------------------|-----------------------------|------------------------------------|---------------------------------|
| | Fixed loan facilities | Revolving credit facilities | Total commercial finance commitments | Fixed loan facilities | Revolving credit facilities | Total personal finance commitments | Total lease finance commitments |
| | \$m | \$m | \$m | \$m | \$m | \$m | \$m |
| 2000-01 | | | | | | | |
| October | 247.0 | 150.7 | 397.7 | 126.0 | 122.6 | 248.6 | 9.4 |
| November | 287.3 | 254.6 | 541.9 | 149.5 | 163.5 | 312.9 | 13.6 |
| December | 329.6 | 394.5 | 724.1 | 138.0 | 148.1 | 286.0 | 14.4 |
| January | 234.2 | 164.6 | 398.9 | 136.1 | 129.1 | 265.2 | 7.7 |
| February | 284.4 | 292.7 | 577.1 | 137.5 | 111.5 | 249.0 | 15.2 |
| March | 321.3 | 278.2 | 599.5 | 164.8 | 147.1 | 311.9 | 13.7 |
| April | 262.6 | 295.6 | 558.2 | 133.7 | 108.6 | 242.4 | 11.2 |
| May | 376.4 | 186.8 | 563.2 | 162.5 | 144.9 | 307.4 | 7.7 |
| June | 524.6 | 375.8 | 900.5 | 165.3 | 168.5 | 333.8 | 19.1 |
| 2001-02 | | | | | | | |
| July | 373.9 | 260.2 | 634.1 | 150.7 | 169.7 | 320.4 | 28.7 |
| August | 374.2 | 220.1 | 594.3 | 165.4 | 143.6 | 308.9 | 15.6 |
| September | 293.2 | 222.3 | 515.5 | 136.5 | 127.2 | 263.7 | 13.5 |
| October | 412.6 | 295.7 | 708.3 | 162.4 | 145.4 | 307.8 | 14.9 |
| November | 551.8 | 295.1 | 846.9 | 180.6 | 178.5 | 359.1 | 25.6 |
| December | 611.8 | 280.5 | 892.3 | 166.0 | 147.2 | 313.2 | 16.2 |

Source: ABS data available on request.

PUBLICATIONS SOURCE INDEX

- (1) *Australian National Accounts, Quarterly State Details*
(Cat. no. 5206.0.40.001)
- (2) International Merchandise Trade, ABS data available on request
- (3) *Retail Trade, Australia* (Cat. no. 8501.0) Monthly
- (4) *New Motor Vehicles Registrations, Australia, Preliminary*
(Cat. no. 9301.0) Monthly
- (5) *State Estimates of Private New Capital Expenditure*
(Cat. no. 5646.0) Quarterly
- (6) *Tourist Accommodation, Australia* (Cat. no. 8635.0) Quarterly
- (7) *Building Approvals, Australia* (Cat. no. 8731.0) Monthly
- (8) *Building Activity, Australia* (Cat. no. 8752.0) Quarterly
- (9) *Engineering Construction Activity, Australia*
(Cat. no. 8762.0) Quarterly
- (10) *Manufacturing Production, Australia, Preliminary*
(Cat. no. 8301.0) Quarterly
- (11) *Livestock Products, Australia* (Cat. no. 7215.0) Quarterly
- (12) *Actual and Expected Private Mineral Exploration, Australia*
(Cat. no. 8412.0) Quarterly
- (13) *Consumer Price Index* (Cat. no. 6401.0) Quarterly
- (14) *Producer Price Indexes* (Cat. no. 6427.0) Quarterly
- (16) *House Price Indexes: Eight Capital Cities*
(Cat. no. 6416.0) Quarterly
- (17) *Australian Demographic Statistics* (Cat. no. 3101.0) Quarterly
- (18) *Labour Force, Australia, Preliminary* (Cat. no. 6202.0) Monthly
- (19) *Job Vacancies, Australia* (Cat. no. 6354.0) Quarterly
- (20) *Industrial Disputes, Australia* (Cat. no. 6321.0) Monthly
- (21) *Average Weekly Earnings, States and Australia*
(Cat. no. 6302.0) Quarterly
- (22) *Wage Cost Index, Australia* (Cat. no. 6345.0) Quarterly
- (23) *Housing Finance for Owner Occupation, Australia*
(Cat. no. 5609.0) Monthly
- (24) *Lending Finance, Australia* (Cat. no. 5671.0) Monthly—and ABS
data available on request
- (25) *Reserve Bank of Australia Bulletin*

FOR MORE INFORMATION...

- INTERNET* **www.abs.gov.au** the ABS web site is the best place to start for access to summary data from our latest publications, information about the ABS, advice about upcoming releases, our catalogue, and Australia Now—a statistical profile.
- LIBRARY* A range of ABS publications is available from public and tertiary libraries Australia-wide. Contact your nearest library to determine whether it has the ABS statistics you require, or visit our web site for a list of libraries.
- CPI INFOLINE* For current and historical Consumer Price Index data, call 1902 981 074 (call cost 77c per minute).
- DIAL-A-STATISTIC* For the latest figures for National Accounts, Balance of Payments, Labour Force, Average Weekly Earnings, Estimated Resident Population and the Consumer Price Index call 1900 986 400 (call cost 77c per minute).

INFORMATION SERVICE

Data which have been published and can be provided within five minutes are free of charge. Our information consultants can also help you to access the full range of ABS information—ABS user-pays services can be tailored to your needs, time frame and budget. Publications may be purchased. Specialists are on hand to help you with analytical or methodological advice.

- PHONE* **1300 135 070**
- EMAIL* **client.services@abs.gov.au**
- FAX* 1300 135 211
- POST* Client Services, ABS, GPO Box 796, Sydney 1041

WHY NOT SUBSCRIBE?

ABS subscription services provide regular, convenient and prompt deliveries of ABS publications and products as they are released. Email delivery of monthly and quarterly publications is available.

- PHONE* 1300 366 323
- EMAIL* subscriptions@abs.gov.au
- FAX* 03 9615 7848
- POST* Subscription Services, ABS, GPO Box 2796Y, Melbourne 3001



2130740003028
ISSN 1039-8880

RRP \$20.00